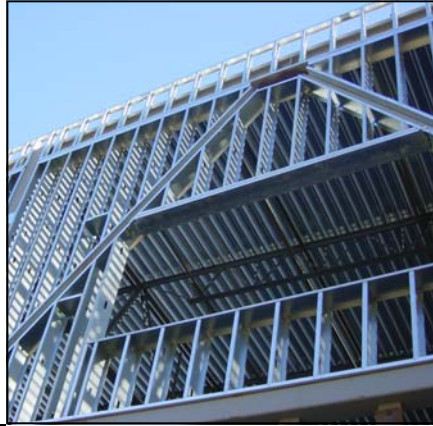




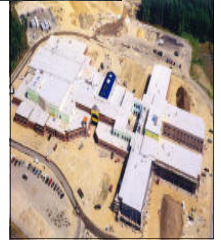
Project:

Facility: Exeter High School
Location: Exeter, NH



Steel Summary:

Interior, exterior steel studs and track
290,000 square foot school



Toll Free: 1-866-783-3569

Tel: 603-466-2500

Fax: 603-466-9400

eFax: 603-215-1255

info@steelements.com

www.steelements.com

www.coldformedsteel.com

Call us today at 1-866-783-3569 to see how you can save time and money while increasing quality!

consulting: design: engineering: manufacturing: trusses: walls: shipping

With **Steel** Elements,

- Reduce risks.
- Comply to codes.
- Purchase more efficiently.
- Improve accountability.
- Streamline your scheduling.

Steelements.com

The New Structure in Steel Framing Systems

